



Meetings

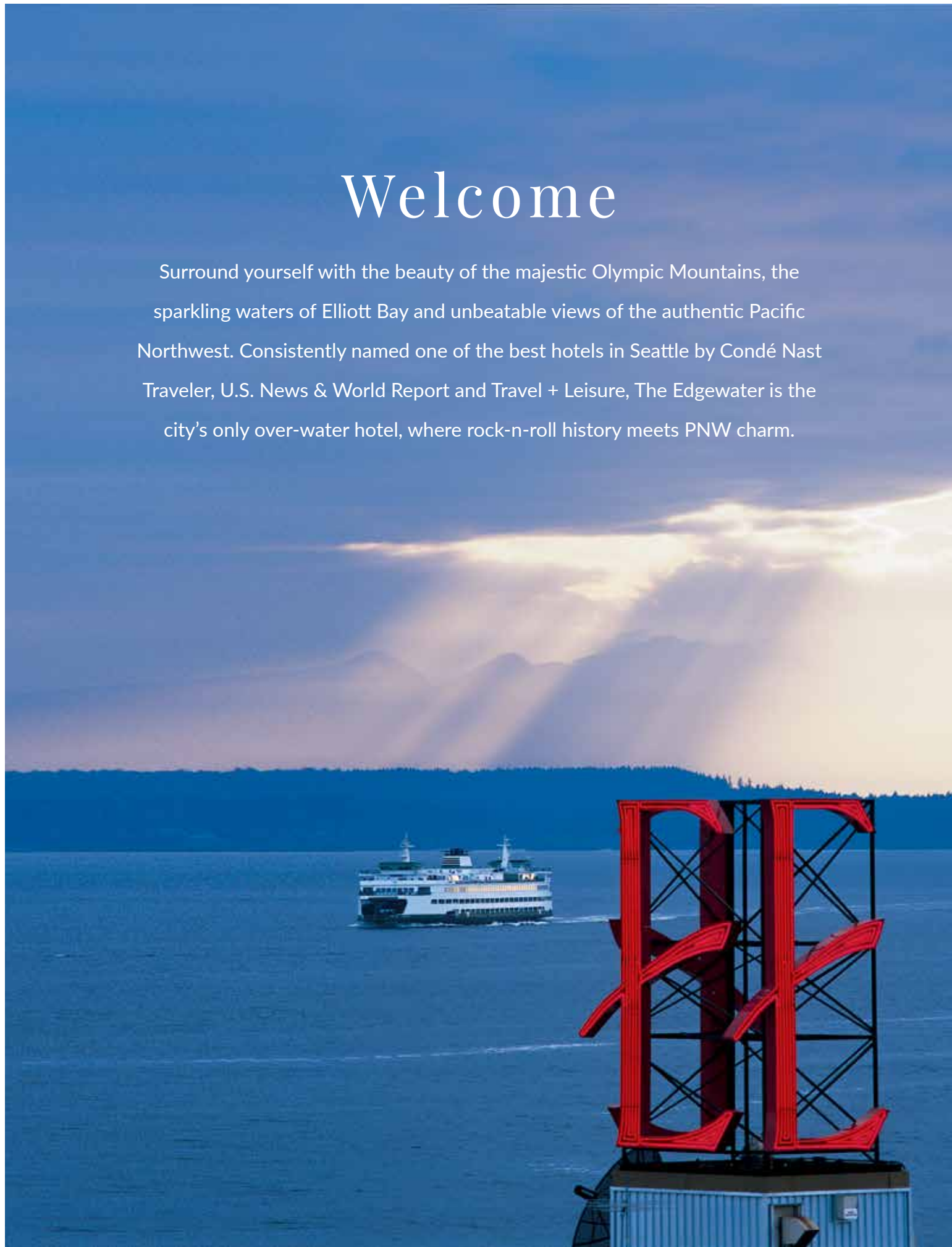
Inspirational events at Seattle's most iconic hotel

edgewaterhotel.com | 800.624.0670
2411 Alaskan Way, Pier 67, Seattle, WA 98121

NOBLE HOUSE
HOTELS & RESORTS

Welcome

Surround yourself with the beauty of the majestic Olympic Mountains, the sparkling waters of Elliott Bay and unbeatable views of the authentic Pacific Northwest. Consistently named one of the best hotels in Seattle by Condé Nast Traveler, U.S. News & World Report and Travel + Leisure, The Edgewater is the city's only over-water hotel, where rock-n-roll history meets PNW charm.





SEATTLE'S ONLY

Over-Water Hotel

Built for the 1962 Seattle World's Fair, this legendary hotel is less than a mile from the Emerald City's main attractions. The Space Needle, Great Wheel, Seattle Aquarium, ferries across the sound and can't-miss shopping and dining are within walking distance from our front doors.

With amenities like in-room fireplaces, plush comforters, coffee makers, data ports and complimentary bathroom products, your attendees can unwind and enjoy the view in their well-appointed guestroom.

Perfectly perched atop Pier 67, The Edgewater's signature restaurant, Six Seven, features a diverse beverage selection and cuisine highlighting the finest organic, naturally raised ingredients in the Pacific Northwest.

Venues

Harness the energy of a downtown waterfront location for your next meeting or event. From large conferences to intimate gatherings, The Edgewater offers over 10,000 square feet of flexible event space and a team of professionals to accommodate both large and small meetings.





OLYMPIC BALLROOM



TERRACE

OLYMPIC BALLROOM

At approximately 2,572 square feet, the Olympic Ballroom is our largest event venue. The floor-to-ceiling windows provide a panoramic view of Elliott Bay, the Olympic Peninsula and the islands of Puget Sound. The spaciousness of this room allows for a wide variety of configurations, accommodating up to 220 guests banquet-style. Fir beams join at the center of the ballroom's 16-foot ceilings creating a dramatic space. Nine crystal chandeliers and four large mirrors frame this central area, reflecting the breathtaking view outside.

TERRACE

Adjoining the ballroom is the 720-square-foot Terrace Room. Dramatic 8-foot French doors open onto the 960-square-foot outdoor terrace. This area offers stunning views of the Seattle skyline, including the Space Needle. Three large mirrors, a stone fireplace and two crystal chandeliers make the versatile Terrace Room an elegant space for a cocktail party or executive retreat. Seating arrangements may accommodate up to 30 guests, or up to 55 guests standing, indoors. The outdoor patio can accommodate an additional 110 guests, standing.



ALKI



CASCADE BALLROOM



ORCAS, WINSLOW & ELLIOTT

ALKI

The Alki Room boasts four bay windows, a built-in slate-topped buffet and can host up to 70 guests. This room is perfect for mid-size meetings, dinners or cocktail parties. The adjoining Winslow Room offers additional space for breakout sessions or buffet dining.

CASCADE BALLROOM

Located on the city side of the hotel, the Cascade Room provides up to a combined 1,334 square feet and can accommodate up to 90 guests seated. The room can be divided in a multitude of ways, offering more intimate spaces for smaller groups.

ORCAS, WINSLOW & ELLIOTT

These three intimate boardrooms are ideal for smaller meetings or group breakouts. Each offers a built-in slate-topped buffet and oversized mirror. These rooms can accommodate up to 14 guests in a conference setting.



FOREST



RAINIER

F O R E S T

This private dining room can accommodate up to 24 guests. Sliding glass doors open to a patio overlooking Elliott Bay. A gas fireplace and northwest-inspired decor perfectly complement the raw-edge tables and chairs.

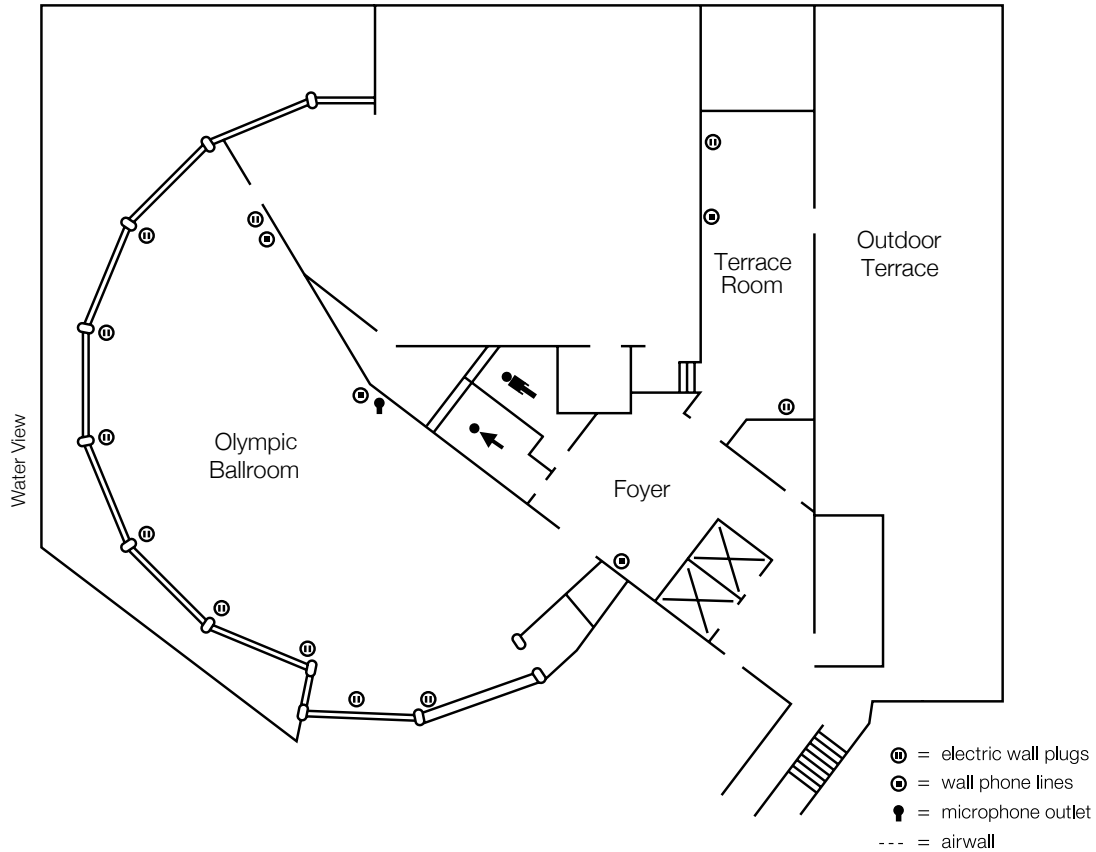
R A I N I E R

This room was designed for meetings with privacy and focus in mind. Located in the interior of the hotel, the Rainier Room can seat up to 90 guests.

B E L L H A R B O R

Adjacent to The Edgewater, the Bell Harbor International Conference Center offers 100,000 square feet of conference, meeting and special event space. From the 300-seat Bay Auditorium modeled after the United Nations to the Rooftop Plaza featuring incredible views of Seattle, Bell Harbor offers the perfect setting for overflow meeting space and accommodations for larger events.

Olympic Ballroom & Terrace

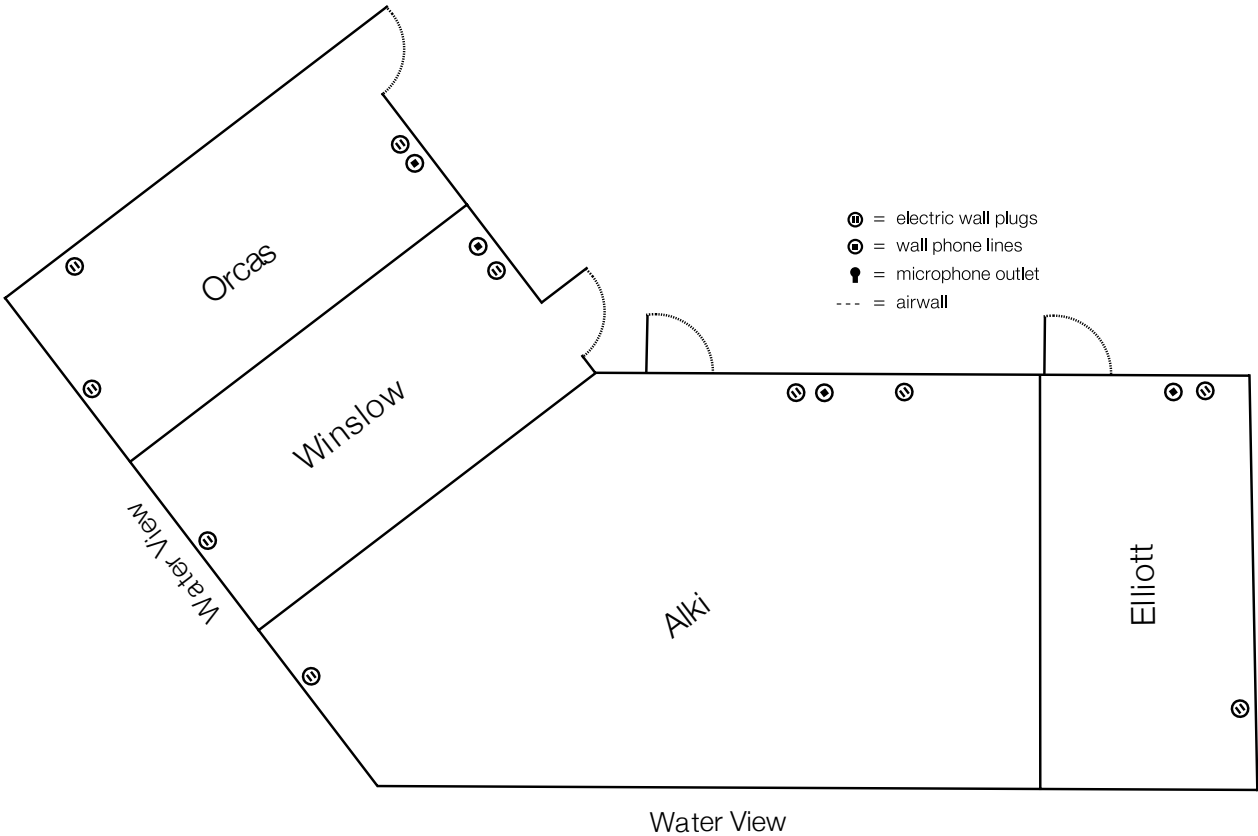


	Dimensions	Approx Sq Ft	Banquet	Reception
Olympic Ballroom	62' x 91'	2,572	220	300
Terrace Room	42' x 16'	720	30	55
Outdoor Terrace + Deck	23' x 51'	960	70	110



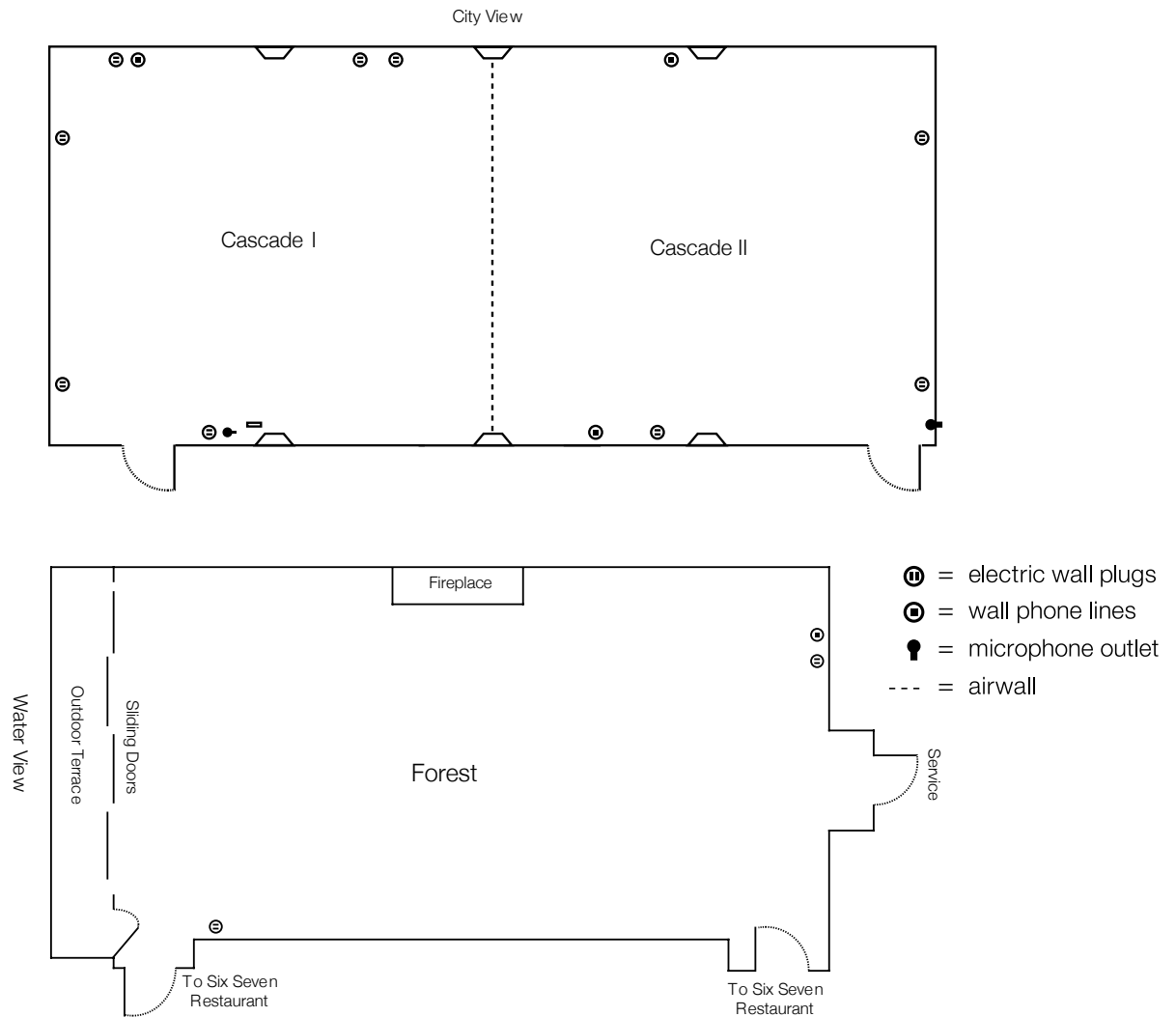
FOR MORE INFORMATION OR TO VIRTUALLY TOUR OUR
EVENT SPACES, PLEASE SCAN THE QR CODE BELOW.

Orcas, Winslow, Alki & Elliott



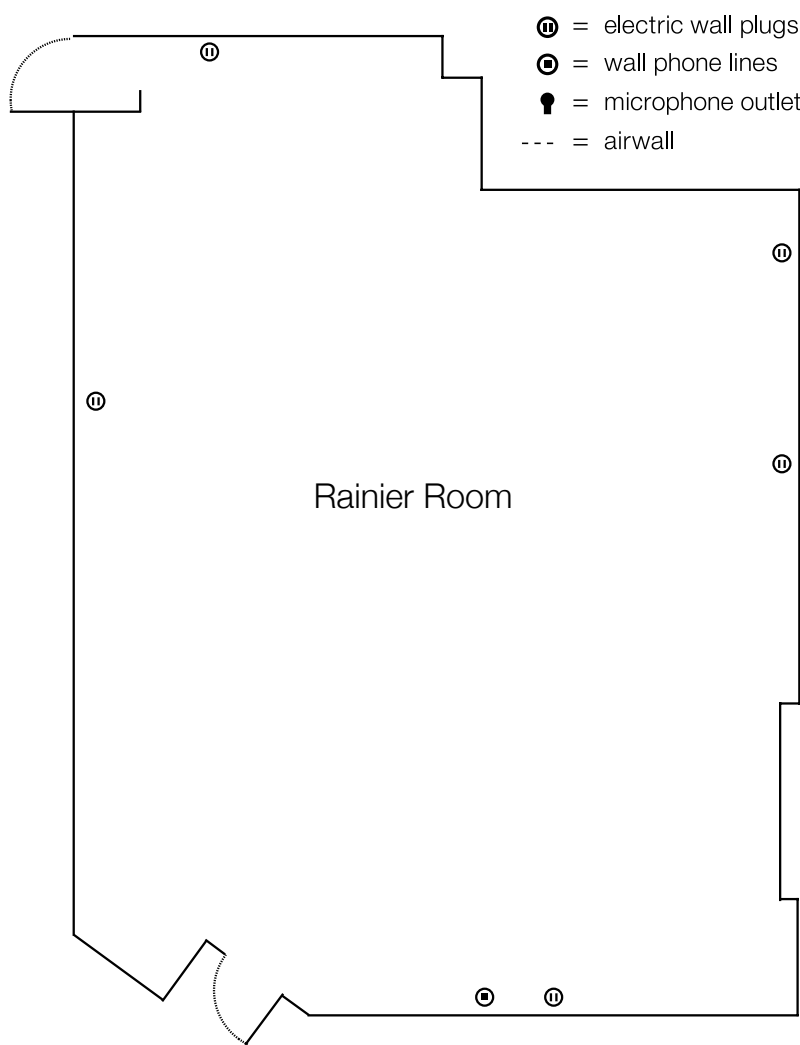
	Dimensions	Approx Sq Ft	Banquet	Reception
Orcas Room	27' x 12'	350	20	35
Winslow Room	27' x 12'	350	20	35
Alki Room	26' x 50'	1,111	70	110
Elliott Room	27'x 12'	350	20	35

Cascade & Forest

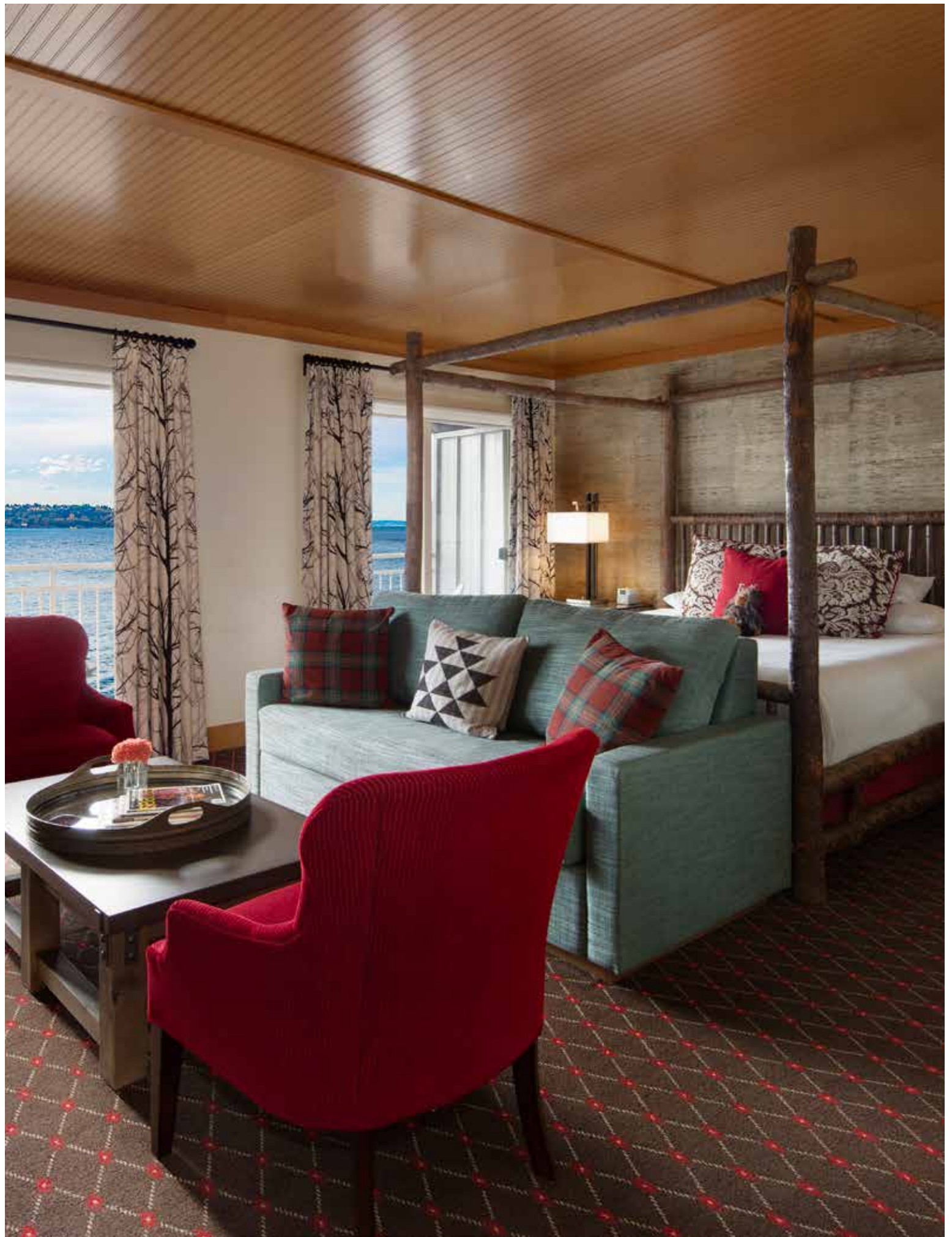


	Dimensions	Approx Sq Ft	Banquet	Reception
Cascade Ballroom	24' x 54'	1,334	90	120
Cascade I	24' x 27'	665	40	60
Cascade II	24' x 27'	665	40	60
Forest Room	19' x 32'	541	24	40

Rainier Room



	Dimensions	Approx Sq Ft	Banquet	Reception
Rainier Room	43' x 32'	1,286	90	110



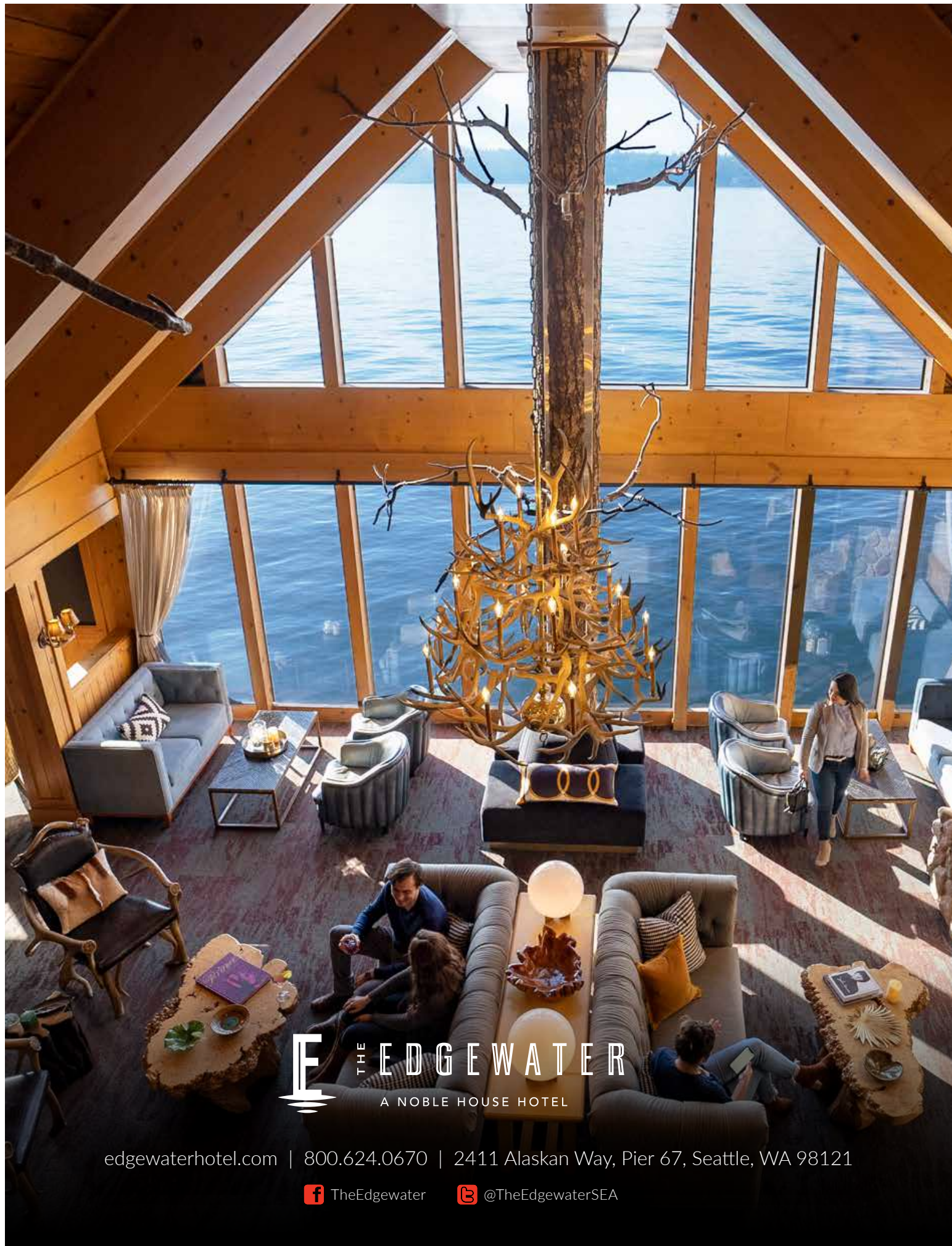
Guestrooms

Whether facing Puget Sound or the Seattle skyline, all of our Pacific Northwest-inspired guestrooms and suites are the ideal setting for a one-of-a-kind stay. Ranging from 225 to 1,000 square feet of living space, your team is sure to relax the moment they arrive.



Catering

From breakfast to breakouts, plated dinners to buffet stations, The Edgewater has catering down to a science. Choose from elaborate menus of eclectic dishes or customize your desired meal. The Edgewater is equipped with intricate options to cater any event, exactly as imagined. Our team pays the utmost attention to every detail to ensure your catering presentation is as promised.



THE EDGEWATER
A NOBLE HOUSE HOTEL

edgewaterhotel.com | 800.624.0670 | 2411 Alaskan Way, Pier 67, Seattle, WA 98121



TheEdgewater



@TheEdgewaterSEA